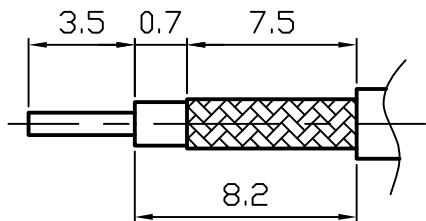
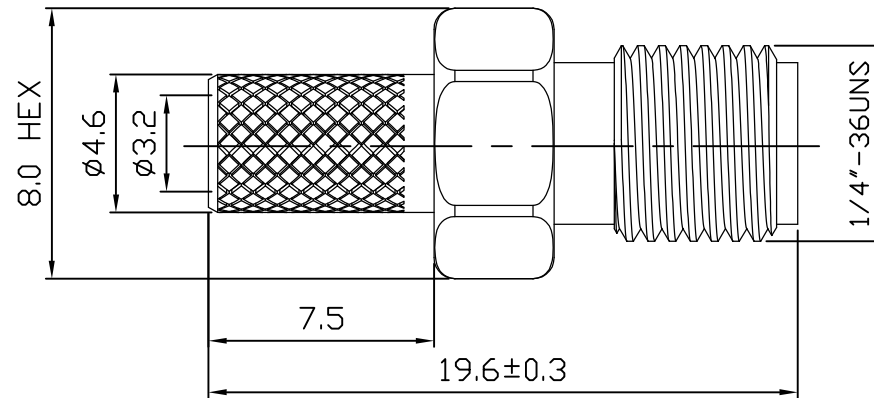
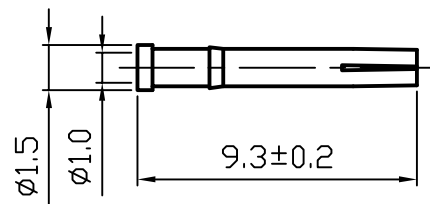
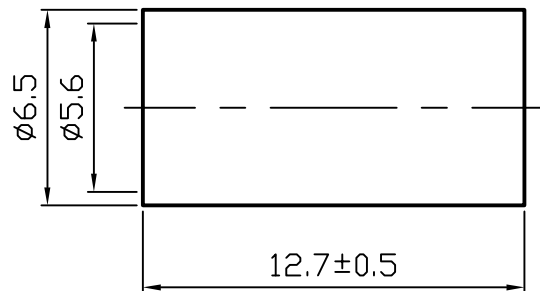
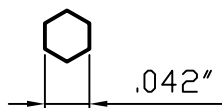


ROHS COMPLIANCE

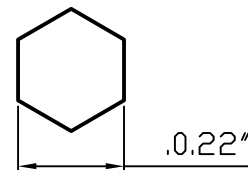
DATE	DESCRIPTION	REV
13.07.15	NEW RELEASE	A



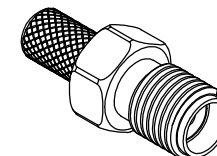
Recommended Cable Stripping Dimensions



Recommended Crimped Dimensions For Center Pin



Recommended Crimped Dimensions For Ferrule



DO NOT SCALE DRAWING

NO	Description	Q'ty	Material	Finish	Part Number
4	RING	1	BRASS	NICKEL	
3	INSULATOR	1	PTFE	WHITE	
2	PIN	1	P.Bronze	GOLD	
1	BODY	1	BRASS	NICKEL	

UNLESS OTHERWISE SPECIFIED
 1. REMOVE ALL BURRS.
 2. BREAK ALL CONNERS & EDGES CO. 15 MAX.
 3. CHAMFER 1ST & LAST THREADS 45°.
 4. DIAMETERS ON COMMON CENTERS.
 TO BE CONCENTRIC WITHIN 0.01 T. I. R.
 5. ALL DIMENSIONS ARE AFTER PLATING.

MAJOR DIMENSIONS
 UNLESS OTHERWISE NOTED TOLERANCES
 0.5-6=±0.2
 6-30=±0.4
 30-120=±0.6
 ANGLES=±5°

APPROVED BY
 CHECKED BY
 DRAWING BY
Sheng
 DATE
 2013/07/15

DRAWING NO
S-009-1TGN-A
 TITLE
SMA FEMALE CRIMP FOR RG 58U
 REV.
 A
 **WEIJE ELECTROICS CO., LTD**

A