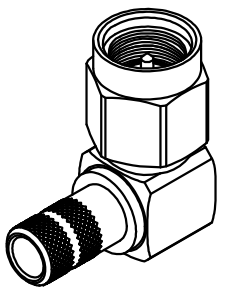
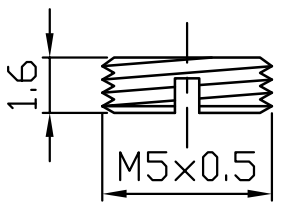
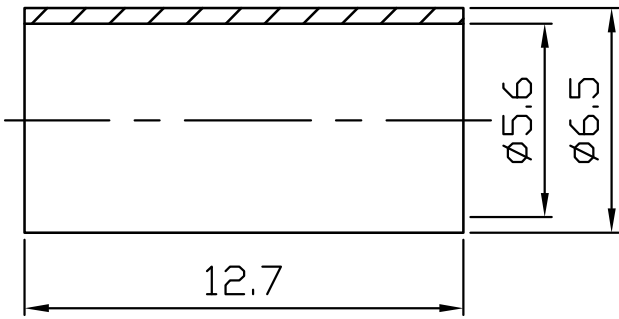
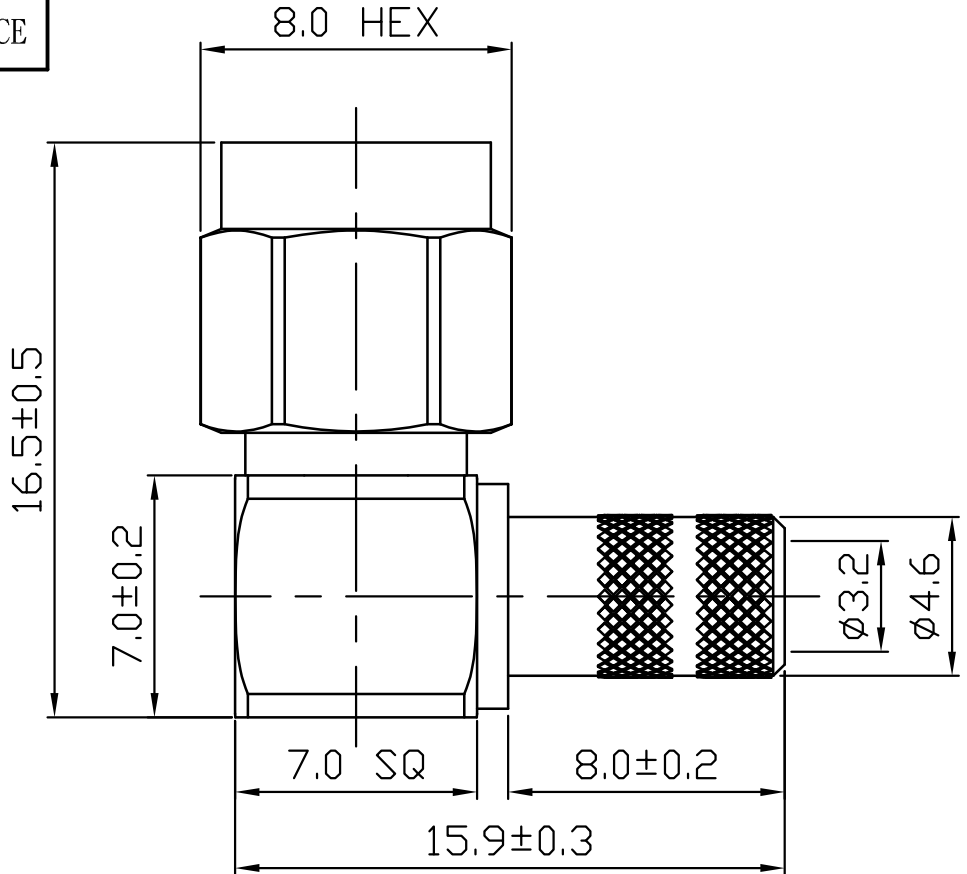


ROHS COMPLIANCE

DATE	DESCRIPTION	REV
14.09.01	NEW RELEASE	A



9	COVER	1	BRASS	NICKEL	
8	RING	1	BRASS	NICKEL	
7	C-RING	1	BeCu	NONE	
6	GASKET	1	RUBBER	RED	
5	SHELL	1	BRASS	NICKEL	
4	INSULATOR	1	PTFE	WHITE	
3	PIN	1	BRASS	GOLD	
2	BODY	1	BRASS	NICKEL	
1	BODY	1	BRASS	NICKEL	
NO	Description	Q'ty	Material	Finish	Part Number

UNLESS OTHERWISE SPECIFIED 1. REMOVE ALL BURRS. 2. BREAK ALL CONNERS & EDGES CO.15 MAX. 3. CHAMFER 1ST & LAST THREADS 45°. 4. DIAMETERS ON COMMON CENTERS. TO BE CONCENTRIC WITHIN 0.01 T.I.R. 5. ALL DIMENSIONS ARE AFTER PLATING.	MAJOR DIMENSIONS	APPROVED BY	DRAWING NO	
	UNLESS OTHERWISE NOTED TOLERANCES	CHECKED BY	S-004-1TGN-A	
	0.5-6=±0.2 6-30=±0.4 30-120=±0.6 ANGLES=±5°	DRAWING BY	TITLE	REV.
	SCALE 4/1 UNIT MM	DATE	SMA MALE R/A CRIMP FOR RG/58U	A
	2014/09/01	Sheng	WEIJE ELECTRONICS CO., LTD	

DO NOT SCALE DRAWING