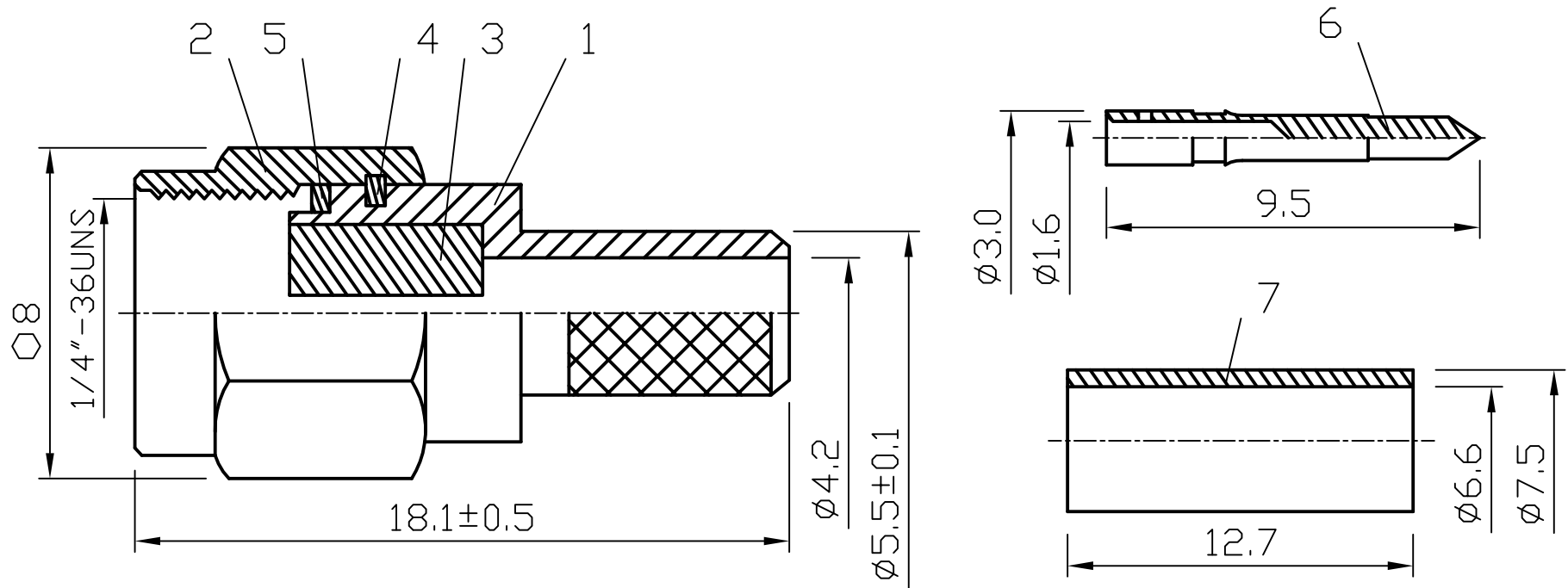



ROHS COMPLIANCE

| | | |
|----------|-------------|-----|
| DATE | DESCRIPTION | REV |
| 09.10.08 | NEW RELEASE | A |



| 12 | | | | | |
|----|-------------|------|----------|--------|-------------|
| 11 | | | | | |
| 10 | | | | | |
| 9 | | | | | |
| 8 | | | | | |
| 7 | RING | 1 | BRASS | NICKEL | |
| 6 | PIN | 1 | BRASS | GOLD | |
| 5 | GASKET | 1 | RUBBER | RED | |
| 4 | WASHER | 1 | BERYLIUM | NONE | |
| 3 | INSULATOR | 1 | TEFLON | WHITE | |
| 2 | SHELL | 1 | BRASS | NICKEL | |
| 1 | BODY | 1 | BRASS | NICKEL | |
| NO | Description | Q'ty | Material | Finish | Part Number |

| | | | |
|--|--|-------------|--|
| UNLESS OTHERWISE SPECIFIED 1. REMOVE ALL BURRS. 2. BREAK ALL CONNERS & EDGES CO. 15 MAX. 3. CHAMFER 1ST & LAST THREADS 45°. 4. DIAMETERS ON COMMON CENTERS. TO BE CONCENTRIC WITHIN 0.01 T.I.R. 5. ALL DIMENSIONS ARE AFTER PLATING. | MAJOR DIMENSIONS | APPROVED BY | DRAWING NO |
| | UNLESS OTHERWISE NOTED TOLERANCES | CHECKED BY | S-001-1TGN-8X |
| | 0.5-6=±0.2 | DRAWING BY | TITLE |
| | 6-30=±0.4 | ARJEMPY | SMA MALE CRIMP TYPE FOR 8X/H155/LMR240 |
| 30-120=±0.6 | DATE | REV. | A |
| ANGLES=±5° | 2011/03/01 | | |
| SCALE 4/1 UNIT MM |  WEIJE ELECTRONICS CO., LTD | | |

DO NOT SCALE DRAWING