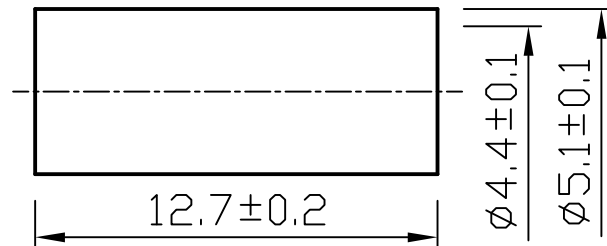
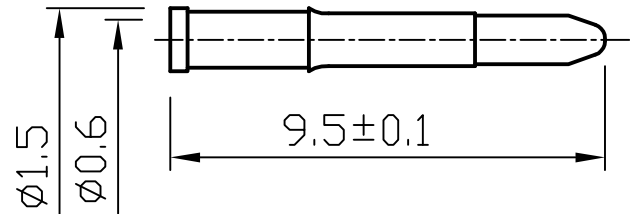
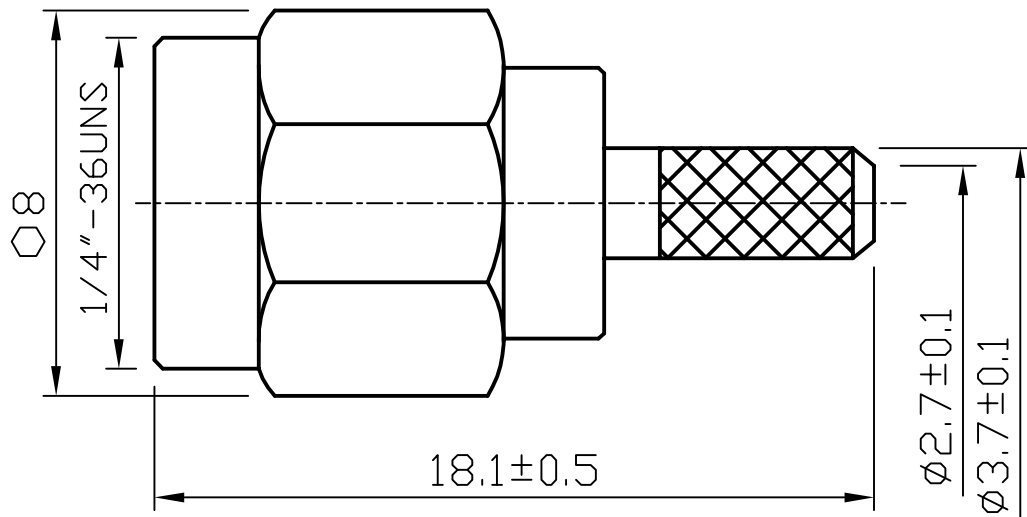



ROHS COMPLIANCE

DATE	DESCRIPTION	REV
10.06.16	NEW RELEASE	A



12					
11					
10					
9					
8					
7	GASKET	1	RUBBER	RED	
6	WASHER	1	BERYLIUM	NONE	
5	RING	1	BRASS	NICKEL	
4	INSULATOR	1	TEFLON	WHITE	
3	PIN	1	BRASS	GOLD	
2	BODY	1	BRASS	NICKEL	
1	SHELL	1	BRASS	NICKEL	
NO	Description	Q'ty	Material	Finish	Part Number

UNLESS OTHERWISE SPECIFIED 1. REMOVE ALL BURRS. 2. BREAK ALL CONNERS & EDGES CO.15 MAX. 3. CHAMFER 1ST & LAST THREADS 45°. 4. DIAMETERS ON COMMON CENTERS. TO BE CONCENTRIC WITHIN 0.01 T.I.R. 5. ALL DIMENSIONS ARE AFTER PLATING.	MAJOR DIMENSIONS	APPROVED BY	DRAWING NO	
	UNLESS OTHERWISE NOTED TOLERANCES	CHECKED BY	S-001-1TGN-2.5C2V	
	0.5-6=±0.2 6-30=±0.4 30-120=±0.6 ANGLES=±5°	DRAWING BY	TITLE	REV.
	SCALE 4/1 UNIT MM DATE 2010/12/16	<i>ARJEMPY</i>	SMA MALE CRIMP TYPE FOR 2.5C2V	A
		 WEIJE ELECTRONICS CO., LTD		

DO NOT SCALE DRAWING