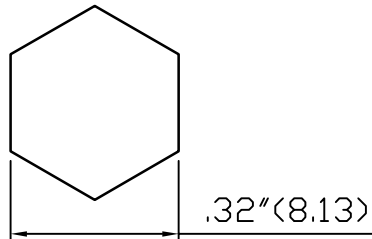
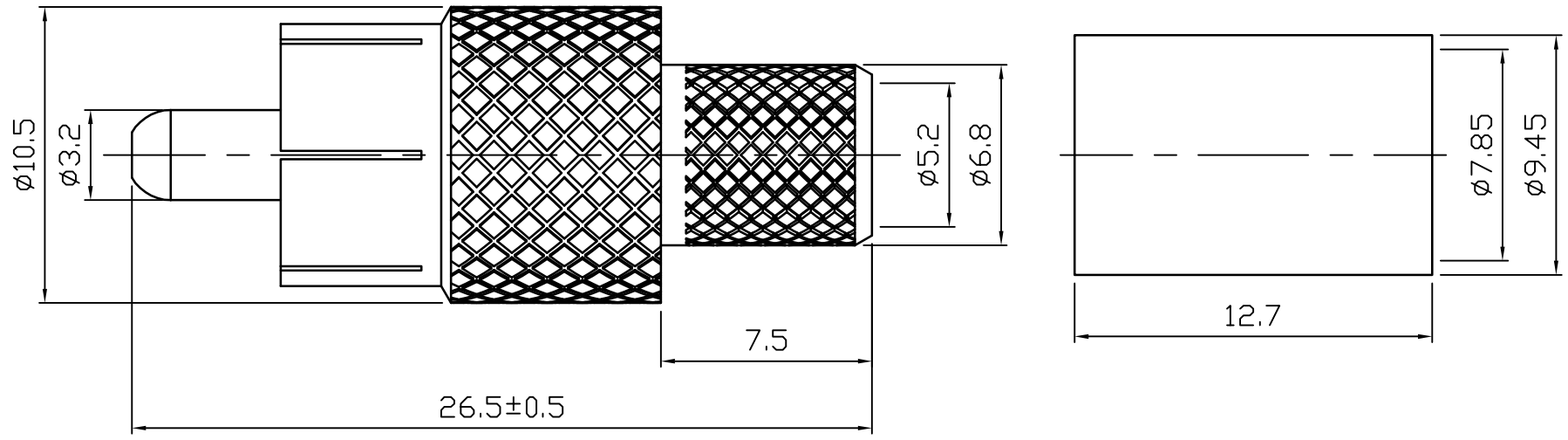
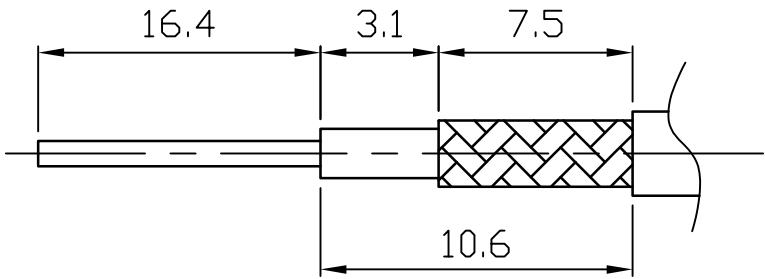


ROHS COMPLIANCE

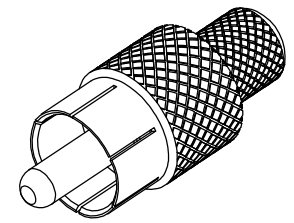
DATE	DESCRIPTION	REV
14.02.19	NEW RELEASE	A



Recommended Crimped Dimensions for Ferrule




Recommended Cable Stripping Dimensions



DO NOT SCALE DRAWING

NO	Description	Q'ty	Material	Finish	Part Number
3	PIN	1	BRASS	NICKEL	
2	INSULATOR	1	POM	WHITE	
1	BODY	1	BRASS	NICKEL	

UNLESS OTHERWISE SPECIFIED 1. REMOVE ALL BURRS. 2. BREAK ALL CONNERS & EDGES CO.15 MAX. 3. CHAMFER 1ST & LAST THREADS 45°. 4. DIAMETERS ON COMMON CENTERS. TO BE CONCENTRIC WITHIN 0.01 T. I. R. 5. ALL DIMENSIONS ARE AFTER PLATING.	MAJOR DIMENSIONS		APPROVED BY		DRAWING NO	
	UNLESS OTHERWISE NOTED TOLERANCES		0.5-6=±0.2 6-30=±0.4 30-120=±0.6 ANGLES=±5°		R-001-M-1DNN-5C2V	
	SCALE	4/1			UNIT	MM
					RCA PLUG CRIMP FOR CABLE 5C2V	
				DRAWING BY <i>Sheng</i>		 WEIJE ELECTRONICS CO., LTD
				DATE 2014/02/19		

8 7 6 5 4 3 2 1