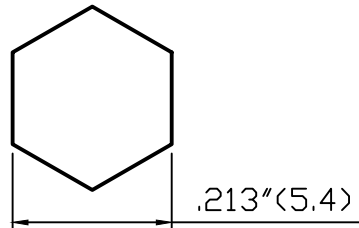
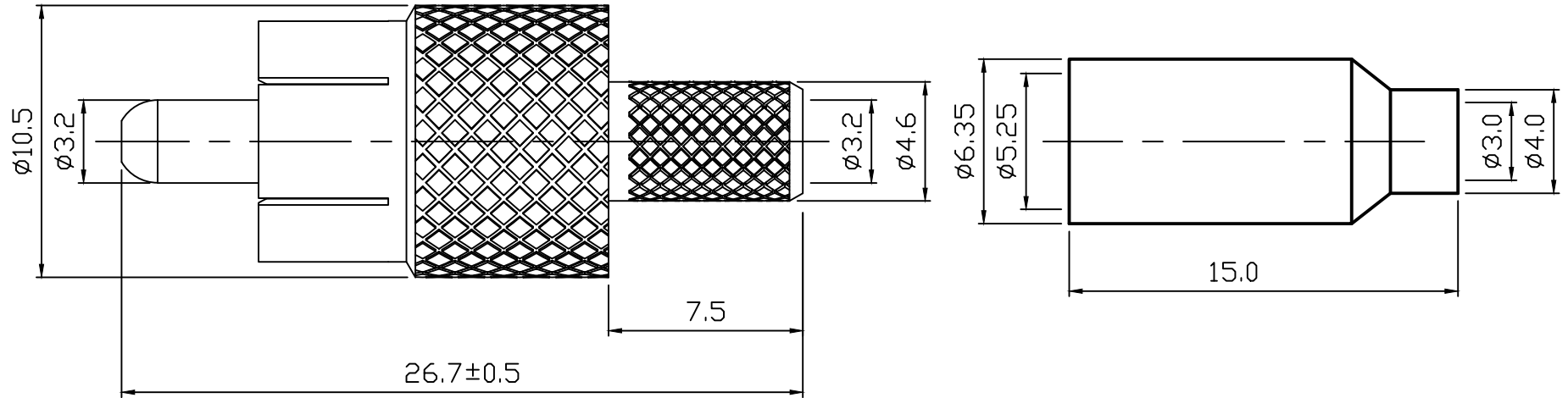
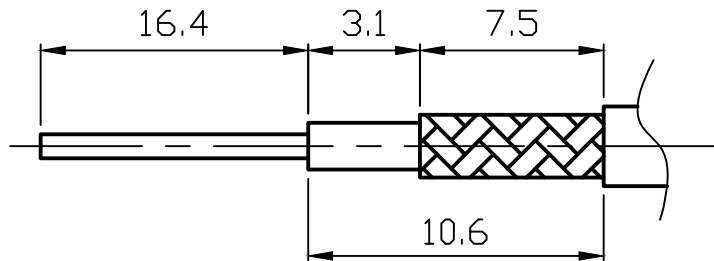


ROHS COMPLIANCE

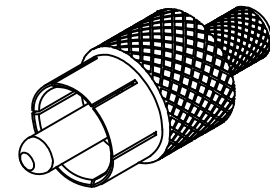
DATE	DESCRIPTION	REV
14. 02. 19	NEW RELEASE	NA



Recommended Crimped Dimensions for Ferrule



Recommended Cable Stripping Dimensions




DO NOT SCALE DRAWING

NO	Description	Q'ty	Material	Finish	Part Number
4	RING	1	BRASS	NICKEL	
3	PIN	1	BRASS	NICKEL	
2	INSULATOR	1	POM	WHITE	
1	BODY	1	BRASS	NICKEL	

UNLESS OTHERWISE SPECIFIED  
 1. REMOVE ALL BURRS.  
 2. BREAK ALL CONNERS & EDGES CO. 15 MAX.  
 3. CHAMFER 1ST & LAST THREADS 45°.  
 4. DIAMETERS ON COMMON CENTERS.  
 TO BE CONCENTRIC WITHIN 0.01 T. I. R.  
 5. ALL DIMENSIONS ARE AFTER PLATING.

MAJOR DIMENSIONS	
UNLESS OTHERWISE NOTED TOLERANCES	
0.5-6	±0.2
6-30	±0.4
30-120	±0.6
ANGLES=±5°	
SCALE	4/1 UNIT MM

APPROVED BY	
CHECKED BY	<i>FyunSiang</i>
DRAWING BY	<i>Sheng</i>
DATE	2017/11/09

DRAWING NO		R-001-1DNN-M-AD	
TITLE		RCA PLUG CRIMP FOR CABLE RG174U	REV. NA
		WEIJE ELECTRONICS CO., LTD	