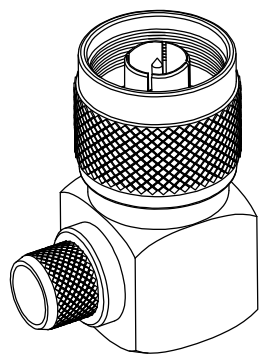
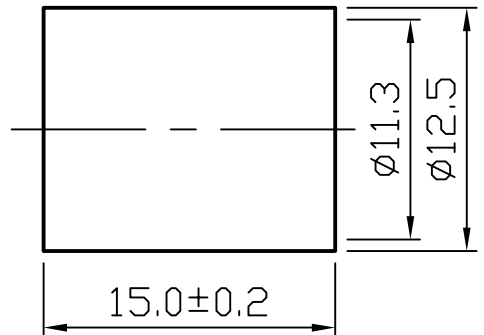
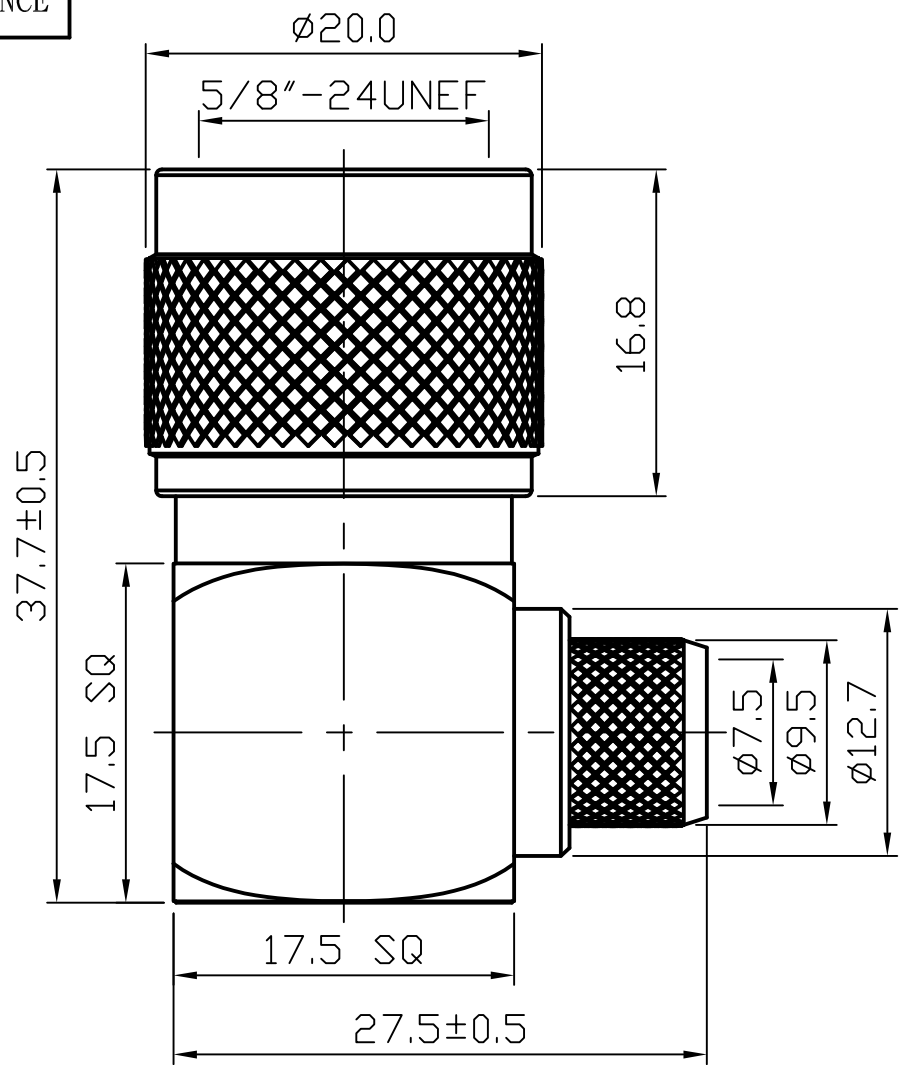


ROHS COMPLIANCE

DATE	DESCRIPTION	REV
14.01.22	NEW RELEASE	A



DO NOT SCALE DRAWING

8	RING	1	BRASS	NICKEL	
7	SCREW	1	BRASS	NICKEL	
6	GASKET	1	RUBBER	RED	
5	WASHER	1	BRASS	NONE	
4	PIN	1	BRASS	GOLD	
3	INSULATOR	1	POM	WHITE	
2	SHELL	1	BRASS	NICKEL	
1	BODY	3	BRASS	NICKEL	
NO	Description	Q'ty	Material	Finish	Part Number

UNLESS OTHERWISE SPECIFIED  
 1. REMOVE ALL BURRS.  
 2. BREAK ALL CONNERS & EDGES CO.15 MAX.  
 3. CHAMFER 1ST & LAST THREADS 45°.  
 4. DIAMETERS ON COMMON CENTERS.  
 TO BE CONCENTRIC WITHIN 0.01 T.I.R.  
 5. ALL DIMENSIONS ARE AFTER PLATING.

MAJOR DIMENSIONS  
 UNLESS OTHERWISE NOTED TOLERANCES  
 0.5-6 $\pm$ 0.2  
 6-30 $\pm$ 0.4  
 30-120 $\pm$ 0.6  
 ANGLES $\pm$ 5°

APPROVED BY  
 CHECKED BY  
 DRAWING BY  
*Sheng*  
 DATE 2014/01/22

DRAWING NO  
**N-003-1DGN-E**  
 TITLE  
 R/A N MALE CRIMP FOR RG213 /214U/LMR400  
 REV. A  
 WEIJE ELECTRONICS CO., LTD

8 7 6 5 4 3 2 1