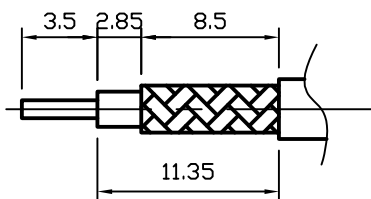
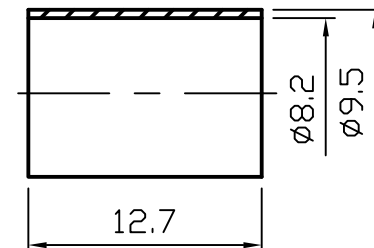
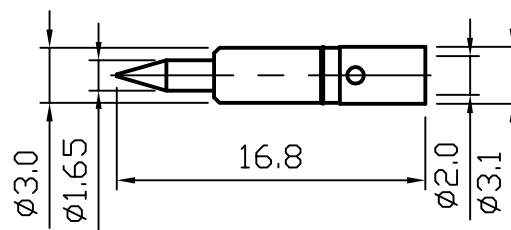
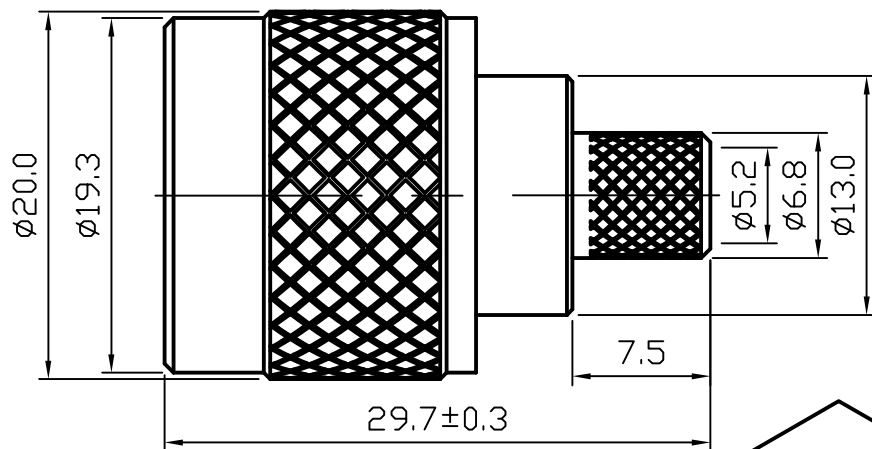
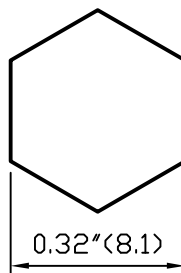


ROHS COMPLIANCE

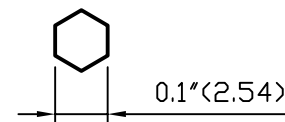
DATE	DESCRIPTION	REV
13.05.27	NEW RELEASE	A



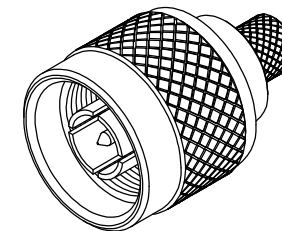
Recommended Cable Stripping Dimensions



Recommended Crimped Dimensions for Ferrule



Recommended Crimped Dimensions for Center Pin




7	GASKET	1	SI-RUBBER	ORANGE	
6	RETAINING RING	1	BRASS	NICKEL	
5	FERRULE	1	BRASS	NICKEL	
4	PIN	1	BRASS	GOLD	
3	INSULATOR	1	PTFE	NONE	
2	SHELL	1	BRASS	NICKEL	
1	BODY	1	BRASS	NICKEL	
NO	Description	Q'ty	Material	Finish	Part Number

UNLESS OTHERWISE SPECIFIED  
 1. REMOVE ALL BURRS.  
 2. BREAK ALL CONNERS & EDGES CO.15 MAX.  
 3. CHAMFER 1ST & LAST THREADS 45°.  
 4. DIAMETERS ON COMMON CENTERS.  
 TO BE CONCENTRIC WITHIN 0.01 T. I. R.  
 5. ALL DIMENSIONS ARE AFTER PLATING.

MAJOR DIMENSIONS  
 UNLESS OTHERWISE NOTED TOLERANCES  
 0.5-6=±0.2  
 6-30=±0.4  
 30-120=±0.6  
 ANGLES=±5°

APPROVED BY  
 CHECKED BY  
 DRAWING BY  
*Sheng*  
 DATE 2013/05/27

DRAWING NO  
**N-001-1TGN-L300**  
 TITLE  
 N MALE CRIMP TYPE FOR 5D-FB/LMR300  
 REV. A  

**WEIJE ELECTRONICS CO., LTD**

DO NOT SCALE DRAWING