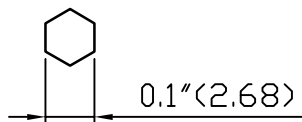
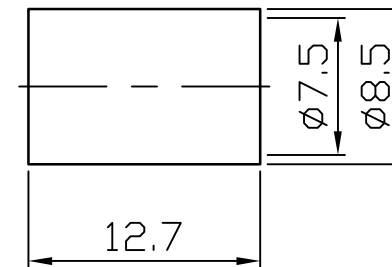
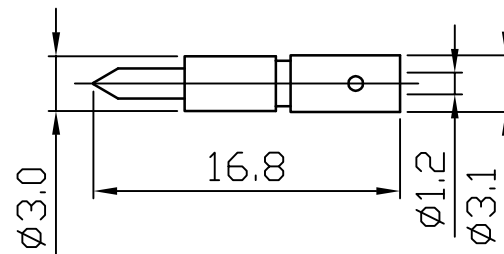
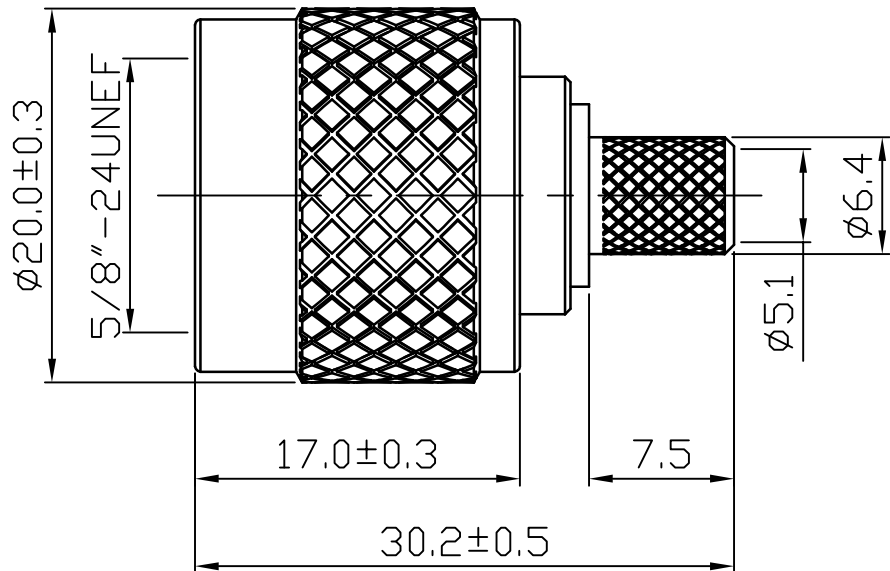
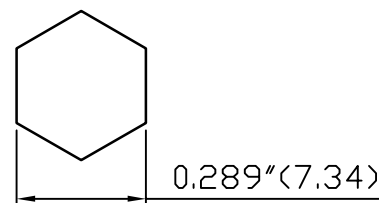


ROHS COMPLIANCE

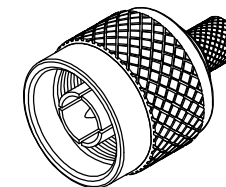
DATE	DESCRIPTION	REV
13.10.24	NEW RELEASE	A



Recommended Crimped Dimensions for Center Pin



Recommended Crimped Dimensions for Ferrule




DO NOT SCALE DRAWING

7	GASKET	1	SI-RUBBER	ORANGE	
6	RETAINING RING	1	BRASS	NONE	
5	FERRULE	1	BRASS	NICKEL	
4	PIN	1	BRASS	GOLD	
3	INSULATOR	1	PTFE	WHITE	
2	SHELL	1	BRASS	NICKEL	
1	BODY	1	BRASS	NICKEL	
NO	Description	Q'ty	Material	Finish	Part Number

UNLESS OTHERWISE SPECIFIED
 1. REMOVE ALL BURRS.
 2. BREAK ALL CONNERS & EDGES CO.15 MAX.
 3. CHAMFER 1ST & LAST THREADS 45°.
 4. DIAMETERS ON COMMON CENTERS.
 TO BE CONCENTRIC WITHIN 0.01 T. I. R.
 5. ALL DIMENSIONS ARE AFTER PLATING.

MAJOR DIMENSIONS
 UNLESS OTHERWISE NOTED TOLERANCES
 0.5-6=±0.2
 6-30=±0.4
 30-120=±0.6
 ANGLES=±5°

APPROVED BY
 CHECKED BY
 DRAWING BY
JH&NG
 DATE 2013/10/24

DRAWING NO
N-001-1TGN-C
 TITLE
N MALE CRIMP FOR RG6U
 REV.
A
 **WEIJE ELECTROICS CO., LTD**

8 7 6 5 4 3 2 1