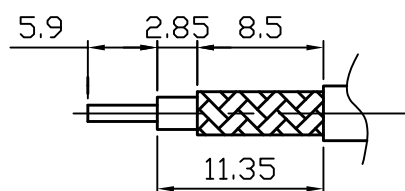
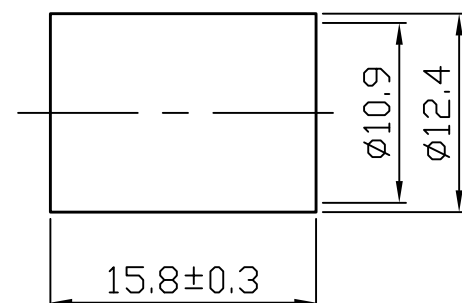
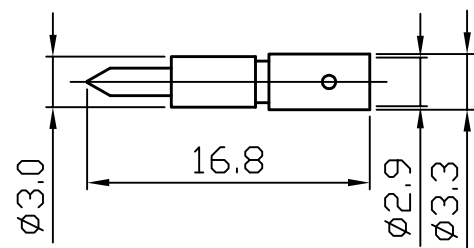
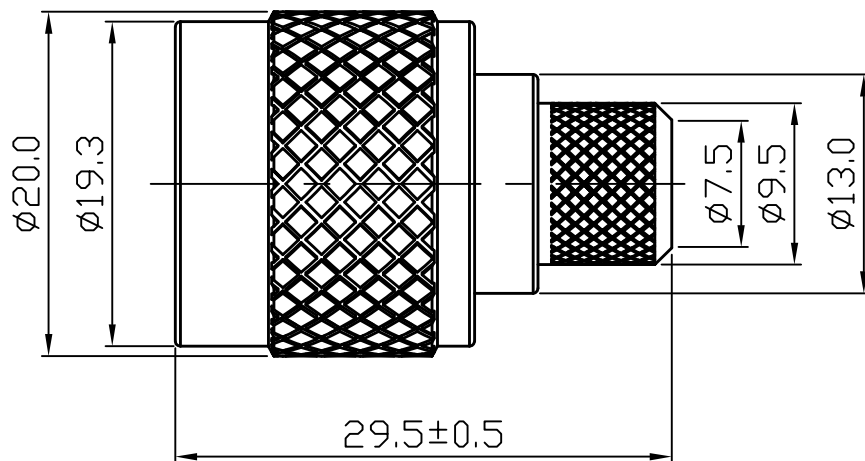
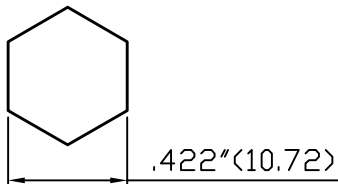


ROHS COMPLIANCE

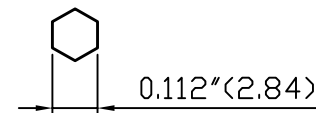
| | | |
|------------|-------------|-----|
| DATE | DESCRIPTION | REV |
| 14. 09. 29 | NEW RELEASE | A |



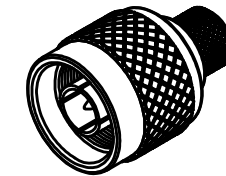
Recommended Cable Stripping Dimensions



Recommended Crimped Dimensions for Ferrule



Recommended Crimped Dimensions for Center Pin



DO NOT SCALE DRAWING

| | | | | | |
|----|----------------|------|-----------|--------|-------------|
| 7 | GASKET | 1 | SI-RUBBER | ORANGE | |
| 6 | RETAINING RING | 1 | BRASS | NONE | |
| 5 | FERRULE | 1 | BRASS | NICKEL | |
| 4 | PIN | 1 | BRASS | GOLD | |
| 3 | INSULATOR | 1 | PTFE | WHITE | |
| 2 | SHELL | 1 | BRASS | NICKEL | |
| 1 | BODY | 1 | BRASS | NICKEL | |
| NO | Description | Q'ty | Material | Finish | Part Number |

| | | | |
|--|-----------------------------------|------------|-------------|
| UNLESS OTHERWISE SPECIFIED 1. REMOVE ALL BURRS. 2. BREAK ALL CONNERS & EDGES CO.15 MAX. 3. CHAMFER 1ST & LAST THREADS 45°. TO BE CONCENTRIC WITHIN 0.01 T. I. R. 4. DIAMETERS ON COMMON CENTERS. 5. ALL DIMENSIONS ARE AFTER PLATING. | MAJOR DIMENSIONS | | APPROVED BY |
| | UNLESS OTHERWISE NOTED TOLERANCES | | CHECKED BY |
| | 0.5-6=±0.2 | 6-30=±0.4 | DRAWING BY |
| | 30-120=±0.6 | ANGLES=±5° | DATE |
| SCALE | 5/1 | UNIT | MM |
| | | 2014/09/29 | |

| | | | |
|------------|--|----------------------------|--|
| DRAWING NO | | N-001-1TGN-214U | |
| TITLE | | N MALE CRIMP FOR RG 214U | |
| | | REV. A | |
| WEIJE | | WEIJE ELECTRONICS CO., LTD | |

8 7 6 5 4 3 2 1