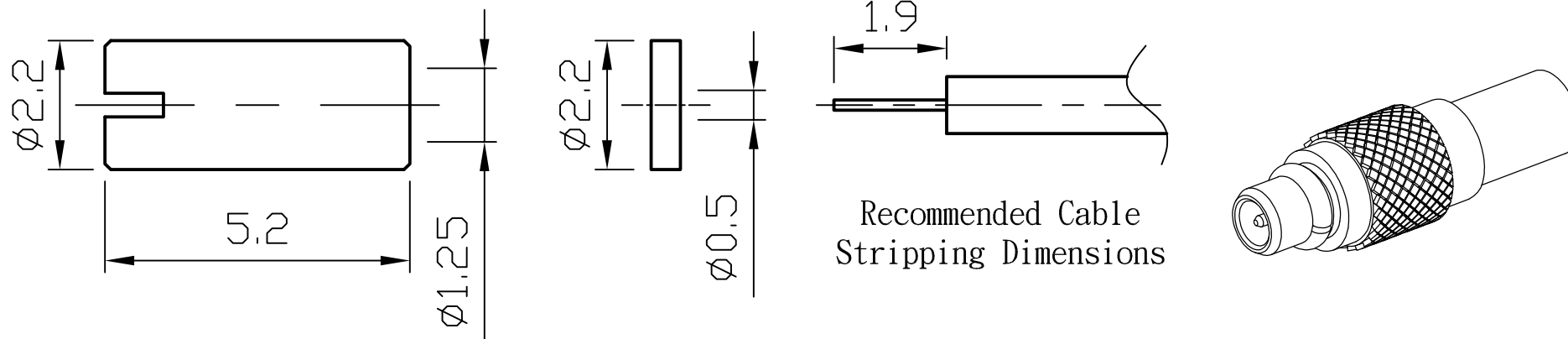
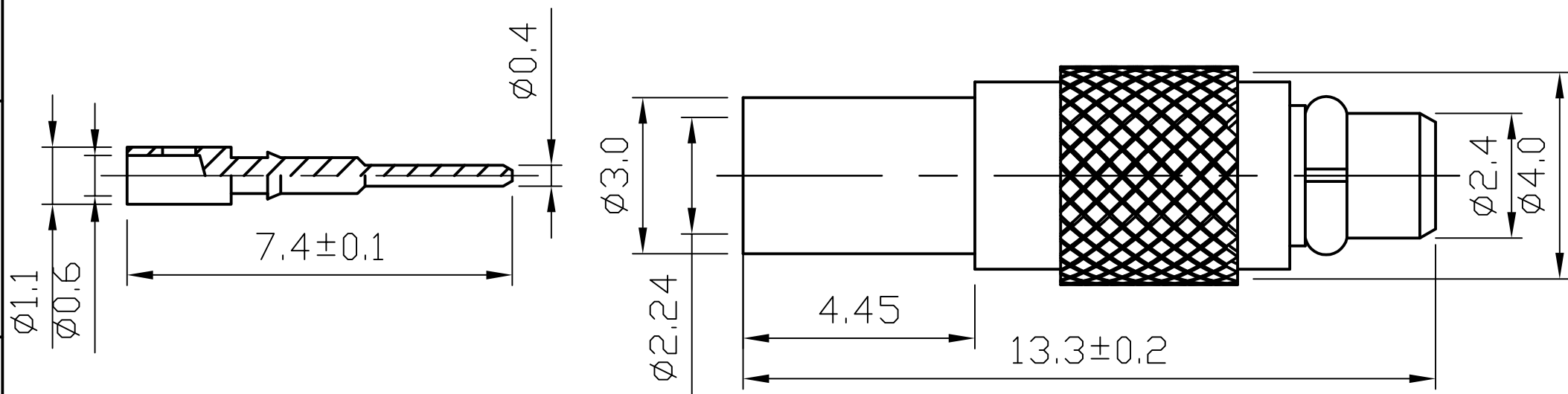


ROHS COMPLIANCE

DATE	DESCRIPTION	REV
12.12.12	NEW RELEASE	A




Recommended Cable Stripping Dimensions

DO NOT SCALE DRAWING

7	FERRULE	1	BRASS	GOLD	
6	PLASTIC RING	1	PTFE	WHITE	
5	C-RING	1	P.Bronze	GOLD	
4	INSULATOR	1	PTFE	WHITE	
3	PIN	1	BRASS	GOLD	
2	BODY	1	BRASS	GOLD	
1	BODY	1	BRASS	GOLD	
NO	Description	Q'ty	Material	Finish	Part Number

UNLESS OTHERWISE SPECIFIED 1. REMOVE ALL BURRS. 2. BREAK ALL CONNERS & EDGES CO.15 MAX. 3. CHAMFER 1ST & LAST THREADS 45°. 4. DIAMETERS ON COMMON CENTERS. TO BE CONCENTRIC WITHIN 0.01 T. I. R. 5. ALL DIMENSIONS ARE AFTER PLATING.	MAJOR DIMENSIONS		APPROVED BY
	UNLESS OTHERWISE NOTED TOLERANCES		CHECKED BY
	0.5-6=±0.2	6-30=±0.4	DRAWING BY
	30-120=±0.6	ANGLES=±5°	Sheng
SCALE	4/1	UNIT	MM
		DATE	2012/12/12

DRAWING NO	
MX-001-1TGG-047	
TITLE	REV.
MCMX MALE SOLDER TYPE FOR .047 SEMI-RIGID CABLE	A
 WEIJE ELECTRONICS CO., LTD	

8 7 6 5 4 3 2 1