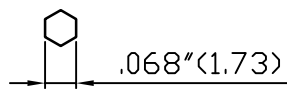
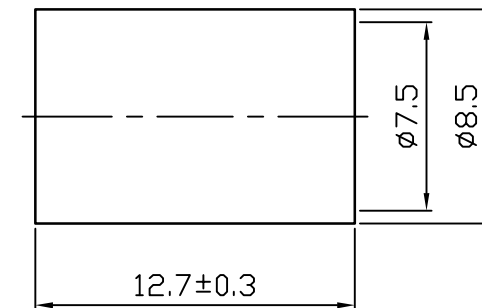
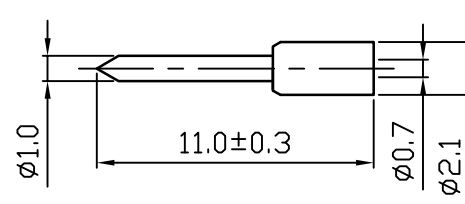
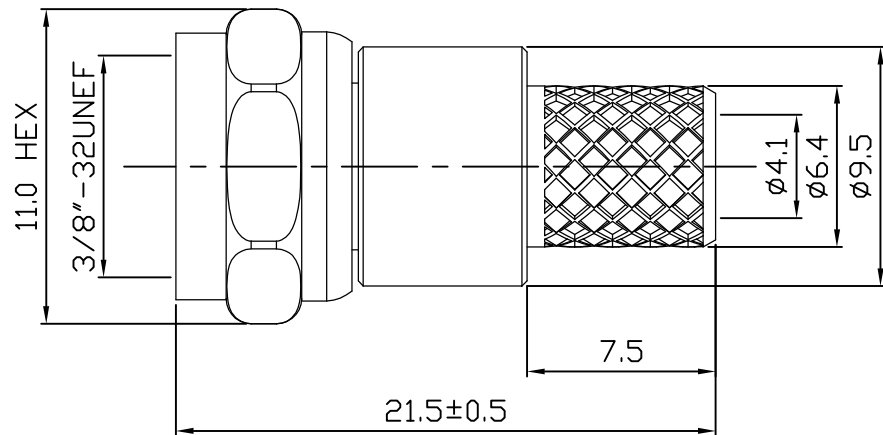
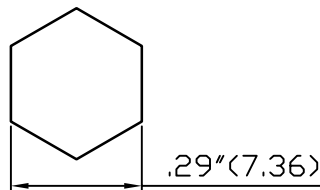


ROHS COMPLIANCE

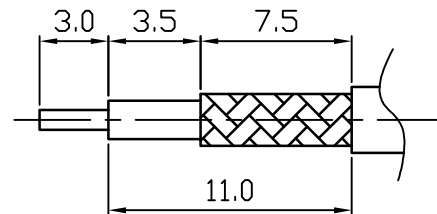
DATE	DESCRIPTION	REV
13.10.22	NEW RELEASE	A



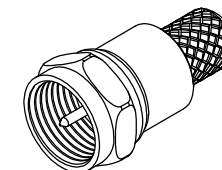
Recommended Crimped Dimensions for Center Pin



Recommended Crimped Dimensions for Ferrule



Recommended Cable Stripping Dimensions




DO NOT SCALE DRAWING

NO	Description	Q'ty	Material	Finish	Part Number
5	RING	1	BRASS	NICKEL	
4	INSULATOR	1	PTFE	WHITE	
3	PIN	1	BRASS	GOLD	
2	BODY	1	BRASS	NICKEL	
1	SHELL	1	BRASS	NICKEL	

UNLESS OTHERWISE SPECIFIED  
 1. REMOVE ALL BURRS.  
 2. BREAK ALL CONNERS & EDGES CO.15 MAX.  
 3. CHAMFER 1ST & LAST THREADS 45°.  
 4. DIAMETERS ON COMMON CENTERS.  
 TO BE CONCENTRIC WITHIN 0.01 T.I.R.  
 5. ALL DIMENSIONS ARE AFTER PLATING.

MAJOR DIMENSIONS  
 UNLESS OTHERWISE NOTED TOLERANCES  
 0.5-6=±0.2  
 6-30=±0.4  
 30-120=±0.6  
 ANGLES=±5°

APPROVED BY  
 CHECKED BY  
 DRAWING BY  
*Sheng*  
 DATE 2013/10/22

DRAWING NO  
**F-001M-1TGN-2003A**  
 TITLE  
**F MALE CRIMP FOR COAX 2003A**  
 REV. A  
 **WEIJE ELECTRONICS CO., LTD**