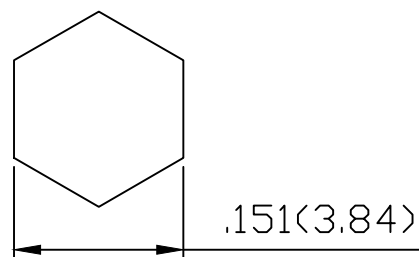
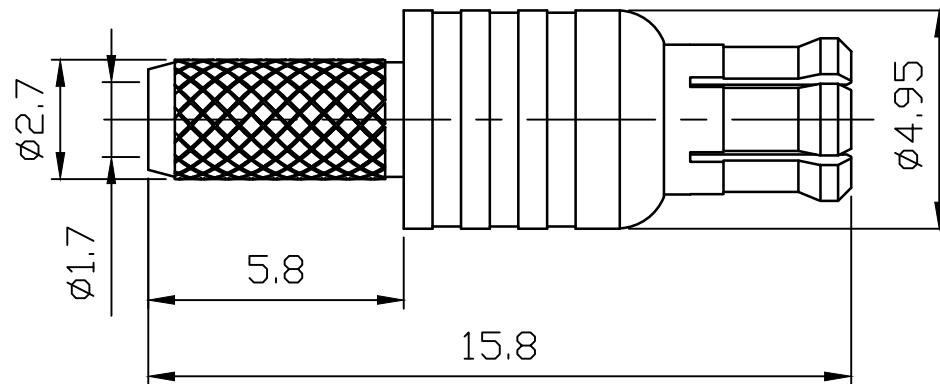
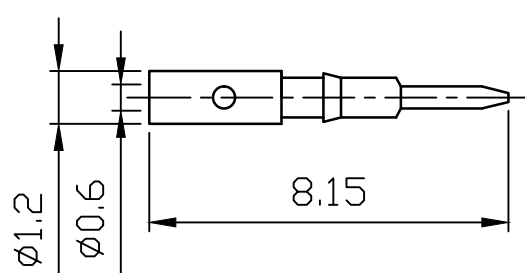
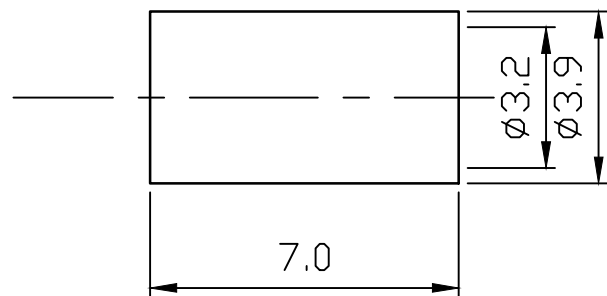
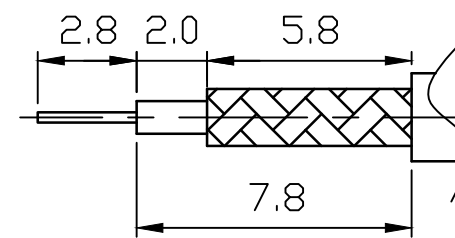


ROHS COMPLIANCE

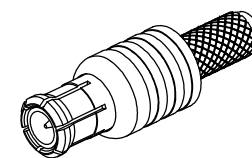
DATE	DESCRIPTION	REV
17. 03. 27	NEW RELEASE	NA



Recommended Crimped Dimensions For Ferrule



Recommended Cable Stripping Dimensions




DO NOT SCALE DRAWING

NO	Description	Q'ty	Material	Finish	Part Number
5	FERRULE	1	BRASS	GOLD	
4	INSULATOR	1	PTFE	WHITE	
3	PIN	1	BRASS	GOLD	
2	SPRING	1	PHOSPHOR BRONZE	GOLD	
1	BODY	1	BRASS	GOLD	

UNLESS OTHERWISE SPECIFIED
 1. REMOVE ALL BURRS.
 2. BREAK ALL CONNERS & EDGES CO. 15 MAX.
 3. CHAMFER 1ST & LAST THREADS 45°.
 4. DIAMETERS ON COMMON CENTERS.
 TO BE CONCENTRIC WITHIN 0.01 T. I. R.
 5. ALL DIMENSIONS ARE AFTER PLATING.

MAJOR DIMENSIONS
 UNLESS OTHERWISE NOTED TOLERANCES
 0.5-6=±0.2
 6-30=±0.4
 30-120=±0.6
 ANGLES=±5°

APPROVED BY
 CHECKED BY
 DRAWING BY
Sheng
 DATE
 2017/04/05

DRAWING NO
 831S1X-RD-XX-1TGG-5
 TITLE
 MCX MALE CRIMP FOR RG174/RG316
 REV.
 NA
 WEIJE ELECTRONICS CO., LTD.